

PREMIUM PERFORMANCE FOR LONG HAUL TRAILER APPLICATIONS.

The RY587 brings the latest in Yokohama technology to the long haul trailer market. With a unique combination of long, even original tread mileage, lower fuel consumption, outstanding durability and trouble-free operation, the RY587 is the perfect choice for today's long haul trucking fleets.

LOW ROLLING RESISTANCE is the hallmark of this state-of-the-art tire, which provides excellent fuel efficiency and protection from scuffing for thousands of trouble-free miles.

ADVANCED TREAD COMPOUND TECHNOLOGY provides longer wear and reduces rolling resistance, resulting in lower fuel consumption.

REVOLUTIONARY MANUFACTURING PROCESS further enhances our advanced compounding to provide even lower rolling resistance for maximum fuel efficiency.

STRESS WEAR CONTROL GROOVES minimize pressure at the edge of the tread, resulting in a dramatic reduction of free-rolling wear, thus providing longer, more even wear over the life of the tire.

BUILT-IN STONE EJECTOR RIBS prevent stones from reaching the bottom of the groove where premature casing damage can start. Yokohama's unique **Belt Edge Cushion** and **Edge Cover Sheet** allow steel belt edge flexibility by bonding tightly for reduced strain and longer casing life.

DISTINCTIVE FIVE-RIB TREAD DESIGN allows for effective water evacuation from under the tread, reducing hydroplaning and increasing wet traction. Extra deep sipes create sharp edges for enhanced wet grip through the late stages of wear.

PURE YOKOHAMA TECHNOLOGY

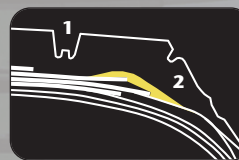
RY587 is equipped with the best Yokohama premium design concepts to meet stringent, modern fleet performance demands.



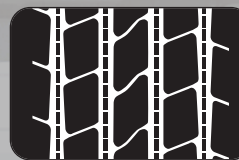
STEM-2 technology extends the life of the casing by redirecting normally destructive stress forces.



SC Grooves at the edges



1. Stone Ejectors
2. Edge Cover Sheet



Tread Design

SmartWaySM
Verified



RY587

SPECIFICATIONS



| Tire Size | Ply Rating (L.R.) | Rim Size | | Inflated Dimensions | | | Loaded Dimensions | | | Part # |
|--------------|-------------------|----------|-----------|----------------------|-------------------------|----------------------|----------------------|----------------------|-----------|---------|
| | | Meas. | Alt. | Overall Width (Inch) | Overall Diameter (Inch) | Groove Depth (1/32") | Section Width (Inch) | Static Radius (Inch) | Rev./Mile | |
| 295/75R22.5 | 14G | 9.00 | 8.25 | 11.4 | 39.8 | 13 | 12.4 | 18.5 | 525 | 58711** |
| 295/75R22.5* | 14G | 9.00 | 8.25-9.00 | 11.4 | 39.8 | 13 | 12.4 | 18.5 | 525 | 58712** |
| 11R22.5 | 14G | 8.25 | 7.50 | 10.9 | 41.0 | 13 | 12.0 | 19.3 | 506 | 58702** |
| 285/75R24.5 | 14G | 8.25 | ... | 10.9 | 41.0 | 13 | 11.8 | 19.2 | 508 | 58703** |
| 11R24.5 | 14G | 8.25 | 7.50 | 10.9 | 43.0 | 13 | 12.0 | 20.0 | 485 | 58704** |

* = MC²

** = SmartWay Verified

Yokohama tires are subject to ongoing development process. Yokohama Tire Corporation reserves the right to change product specifications at any time without notice or obligation. Not all models and sizes available in all locations.



Yokohama Tire Corporation

Corporate Headquarters
P.O. Box 4550
Fullerton, CA 92834-4550
800.423.4544 714.870.3800

Commercial Customer Service

For Dealer Orders Call: 800.241.7051
Dealer Fax Orders Call: 800.455.9656 / 770.932.0560

Consumer Affairs

800.722.9888

yokohamatire.com

