

TY527

FOR ON-HIGHWAY, DRIVE AXLE OPERATIONS.
FOR 2- AND 3-AXLE TRACTORS.

DRIVE TIRE

PREMIUM DRIVE AXLE PERFORMANCE.

The TY527 drive axle tire meets today's modern fleet challenges for supreme drive axle tire performance and long life. Every feature of the TY527 is designed to maximize original tread life, durability, retreadability, and to reduce rolling resistance. Together these features make the TY527 the premium drive tire choice for fleets looking for the long haul payoff during the entire life of the tire.

Ultra Long Mileage

32/32" Tread depth, among the deepest original drive tire tread depth in the industry. Deep original tread depth and Yokohama's special Cap Compound means long wear without sacrificing high-speed durability.

Outstanding Durability

Temperature controlling cap compound fights heat that might otherwise be generated by the deep tread tire. This dense rubber was specially engineered to generate less heat, provide greater stability and reduce tread squirm and abrasion.

Long Even Wear

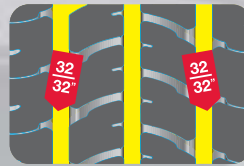
Distinctive directional tread design allows for optimally shaped blocks that prevent block movement and ultimately resist heel and toe wear. The result is long, even wear over the life of the original tread.

Stress wear control rib minimizes irregular wear by reducing the contact pressure on the edge of the outside tread blocks. This allows the shoulder edge to flex more easily.

Edge cover sheet incorporates specially designed rubber that increases durability at belt edges.

Built-in Stone Protection

Stone damage prevention grooves keep stones and debris from reaching the bottom of the groove where premature casing damage can start.



Deeper Groove Depth



Cap Compound



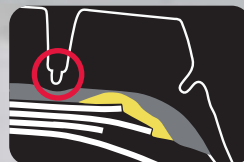
Distinctive Directional Tread Design



Stress Wear Control Rib



Edge Cover Sheet



Stone Damage Prevention Grooves

PURE YOKOHAMA TECHNOLOGY

TY527 is equipped with all the best Yokohama premium design concepts to meet stringent, modern fleet performance demands.



Our Maintenance Saving Concept significantly reduces tire maintenance time and costs for today's fleets through the ingenious integration of six unique design elements.



StrainEnergy Minimization

Our STEM-2 technology extends the life of the casing by redirecting normally destructive stress forces.



(800) 282-1570

 **YOKOHAMA**
www.yokohamatire.com

TY527

SPECIFICATIONS

Tire Size	Ply Rating (L.R.)	Rim Size		Inflated Dimensions			Loaded Dimensions			Part #
		Meas.	Alt.	Overall Width (Inch)	Overall Diameter (Inch)	Groove Depth (1/32")	Section Width (Inch)	Static Radius (Inch)	Rev./Mile	
295/75R22.5	14G	9.00	8.25	11.1	41.0	32	12.1	19.2	512	52701
11R22.5	14G	8.25	7.50	10.9	42.4	32	12.0	19.8	494	52702
285/75R24.5	14G	8.25	...	10.8	42.3	32	11.8	19.8	495	52703
11R24.5	14G	8.25	7.50	11.0	44.4	32	12.0	20.9	471	52704

Yokohama tires are subject to an ongoing development process. Yokohama Tire Corporation reserves the right to change product specifications at any time without notice or obligation. Not all models and sizes available in all locations.

Corporate Headquarters
P.O. Box 4550
Fullerton, California 92834-4550
800.423.4544
714.870.3800

Commercial Customer Service
For Dealer Orders Call: 800.241.7051
Dealer Fax Orders: 800.455.9656
770.932.0560

Consumer Affairs
800.722.9888

Remember to register your Yokohama tires either online at yokohamatire.com or by mail. Mail-in registration cards are available at authorized Yokohama dealers.



www.yokohamatire.com

M-304-0708