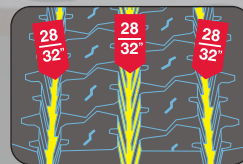


EXCEPTIONAL DRIVE AXLE PERFORMANCE.

There's power in these drive axle tires—maximum power. The popular TY517 drive tire delivers outstanding traction, long even wear and superior durability. STEM-2 technology enables this tough performer to stand up to destructive forces, resulting in multiple retreads and lower maintenance costs.

28/32" Rib-block Tread Depth

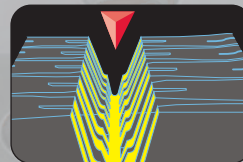
Delivers long wear and road-grabbing power for the long haul without any compromises in traction.



28/32" Tread Depth

Tapered Center Groove

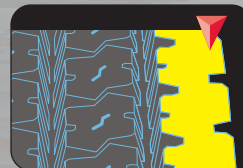
This center-shaped groove promotes stone ejection and reduces tread-stone damage for enhanced casing life and retreadability.



Tapered Center Groove

Solid Outer Shoulder

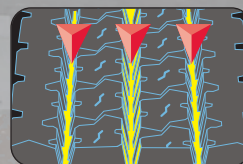
Strong, durable, solid shoulder block ensures flat, even wear on all types of 2- and 3-axle tractors and trucks.



Solid Outer Shoulder

Three Large Circumferential Grooves

Extra wide, self-cleaning, V-shaped grooves for improved water dispersion, lateral stability and long, even wear.



Three Large Circumferential Grooves

Mud and snow rated for drive power in the toughest of conditions.

STEM-2 Technology for extended casing life, extended retread life, and extended durability.

Rock-ejecting, center-groove platform enhances casing life and retreadability by minimizing damage to the casing.

PURE YOKOHAMA TECHNOLOGY

TY517 is equipped with the best Yokohama premium design concepts to meet stringent, modern fleet performance demands.



Our STEM-2 technology extends the life of the casing by redirecting normally destructive stress forces.

SmartWaySM Verified



TY517

SPECIFICATIONS

TY517

Tire Size	Part #	Ply Rating (L.R.)	Rim Size		Inflated Dimensions			Loaded Dimensions			Rev./Mile
			Meas.	Alt.	Overall Width (Inch)	Overall Diameter (Inch)	Groove Depth (1/32")	Section Width (Inch)	Static Radius (Inch)		
295/75R22.5	51701	14G	9.00	8.25	11.4	40.7	28	12.4	19.1	512	
295/75R22.5	51721	16H	9.00	8.25	11.4	40.7	28	12.4	19.1	512	
11R22.5	51702	14G	8.25	7.50	11.1	42.0	28	12.0	19.6	497	
11R22.5	51722	16H	8.25	7.50	11.1	42.0	28	12.0	19.6	497	
285/75R24.5	51703	14G	8.25	...	10.9	42.0	28	11.9	19.7	495	
11R24.5	51704	14G	8.25	7.50	11.1	44.0	28	12.2	20.6	474	
11R24.5	51724	16H	8.25	7.50	11.1	44.0	28	12.2	20.6	474	

Yokohama tires are subject to an ongoing development process. Yokohama Tire Corporation reserves the right to change product specifications at any time without notice or obligation. Not all models and sizes available in all locations.

TY517 MC²

Tire Size	Part #	Ply Rating (L.R.)	Rim Size		Inflated Dimensions			Loaded Dimensions			Rev./Mile
			Meas.	Alt.	Overall Width (Inch)	Overall Diameter (Inch)	Groove Depth (1/32")	Section Width (Inch)	Static Radius (Inch)		
295/75R22.5	51725*	16H	9.00	8.25	11.4	40.7	28	12.4	19.1	512	

* Smartway verified

Yokohama tires are subject to an ongoing development process. Yokohama Tire Corporation reserves the right to change product specifications at any time without notice or obligation. Not all models and sizes available in all locations.



Yokohama Tire Corporation

Corporate Headquarters
P.O. Box 4550
Fullerton, CA 92834-4550
800.423.4544 714.870.3800

Commercial Customer Service

For Dealer Orders Call: 800.241.7051
Dealer Fax Orders Call: 800.455.9656 / 770.932.0560

Consumer Affairs

800.722.9888

yokohamatire.com

